



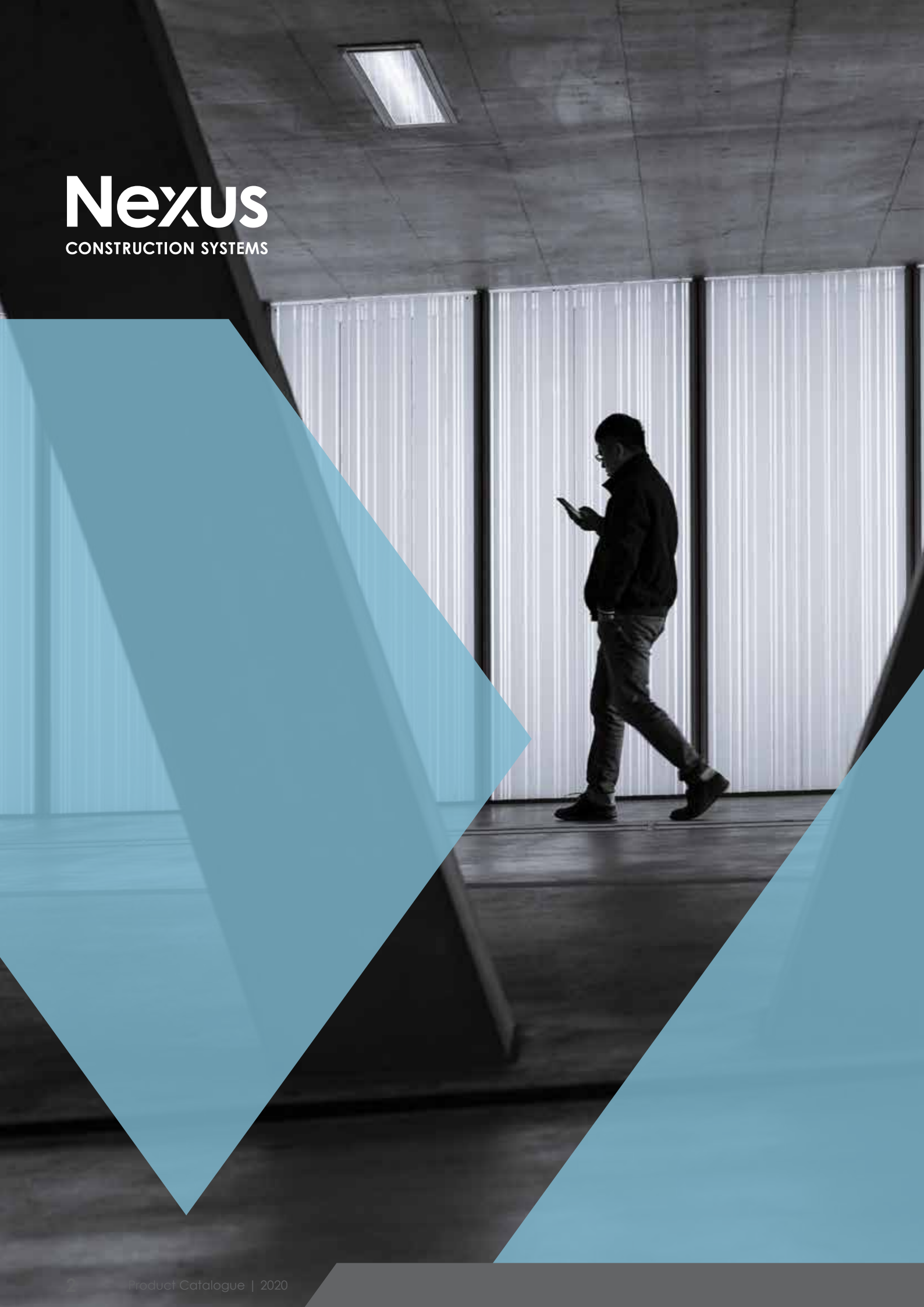
Nexus
CONSTRUCTION SYSTEMS

**build
smarter**

www.nexus.com.au

Nexus

CONSTRUCTION SYSTEMS



Providing exceptional
support within the construction
industry across Australia.

contents

6	company profile
8	concrete lifting
19	ferrules
28	plastic profiles
31	spiral duct
35	reinforcing support chairs
40	chemicals
43	formwork
47	panel connections
54	caulking & repair
58	miscellaneous
61	installation
70	index

This catalogue is not to be used as a technical reference, refer to the current Nexus Construction Handbook.

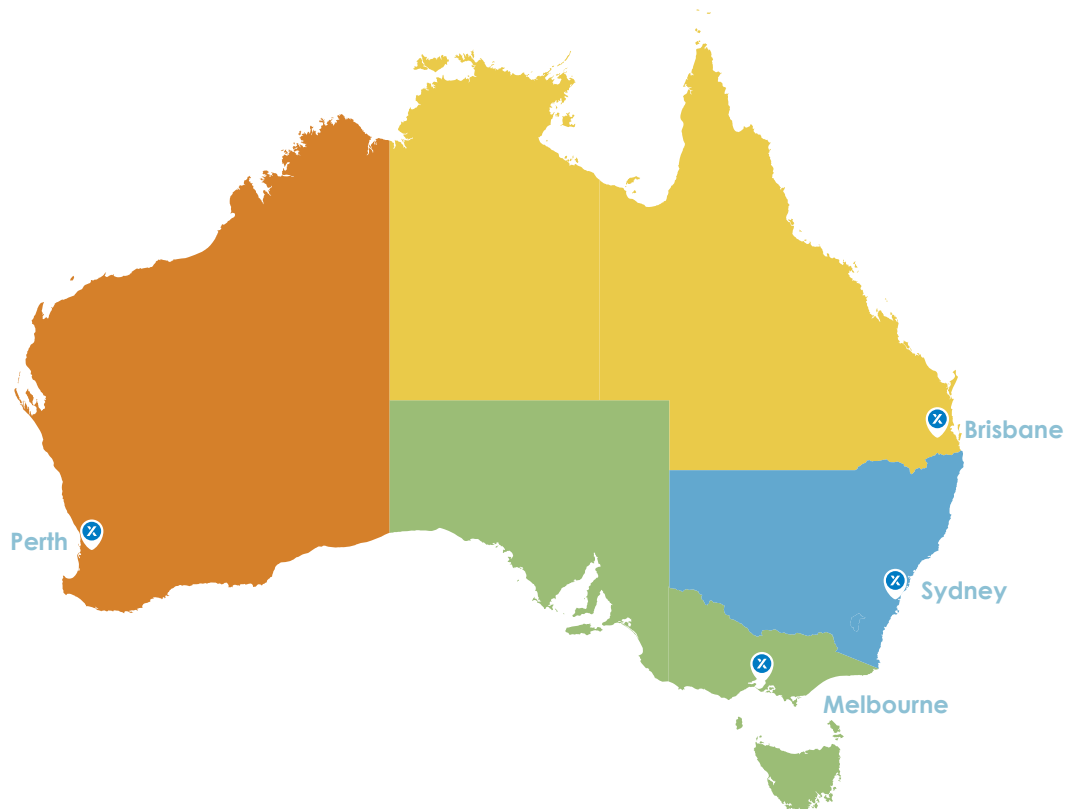


Nexus

CONSTRUCTION SYSTEMS

- ✓ 100% Australian Owned
- ✓ Established 1981
- ✓ Supply to precast & tilt-up concrete construction industries
- ✓ In-house engineering for bracing solutions
- ✓ Commitment to precast industry standards

locations



Melbourne (Head Office)

Services Victoria, South Australia & Tasmania
Unit 4 / 25-27 Olive Grove
Keysborough Vic 3173
(03) 9988 7701

Sydney

Services New South Wales & Australian Capital Territory
2 Nursery Road
Campbelltown NSW 2560
(02) 8089 1580

Brisbane

Services Queensland & Northern Territory
619 Kingston Road
Loganlea Qld 4131
(07) 3910 2442

Perth

Services Western Australia
17 Forward Street
Gnangara WA 6077
(08) 6144 3690

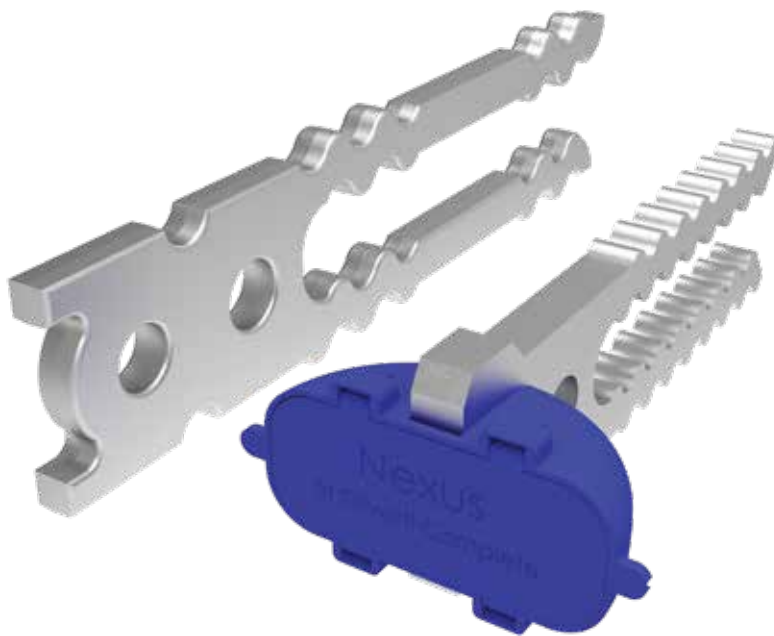
concrete lifting

P82 Olivetti Anchor

The P82 Olivetti Anchor is designed to be used with the P86 Olivetti Ring Clutch for edge lifting of precast and tilt-up panels.

The ears on the head of the Olivetti Anchor prevent the ring clutch head from applying load to the concrete minimising concrete spalling.

All Olivetti Anchors are designed to accept the required shear bar and tension bar where specified for additional capacity.



Part No.	Description	Type
P823	Olivetti Anchor	3t
T845	Olivetti Anchor - complete with shear block and disposable void	5t
P827	Olivetti Anchor	7t
P829	Olivetti Anchor	9t

Part No.	Description	Type	Bar Diameter
P883	P59 Shear Bar	3t	12mm
P889	P59 Shear Bar	7t, 9t	16mm

concrete lifting

Olivetti 7t Face Anchor

The Olivetti 7t Face Anchor has been developed for those that use either the 7t or 9t Olivetti Edge Lift Anchors and want the convenience of a face lift anchor that can be used with the same clutch.



Part No.	Description	Type
P83FL	Olivetti Face Anchor	7t
P83FLCP	Olivetti Face Anchor complete with Void	7t

P83 Olivetti Void Former

The P83 Olivetti Void Former holds the Olivetti Anchor in place during the concrete pour and creates a void in the concrete so that the clutch can engage with the anchor.

It can be fixed to the formwork using either a P84 Holding Rod or a P85 Fixing Plate.



Part No.	Description	Type
P833	Olivetti Void Former	3t
P839	Olivetti Void Former	7t, 9t
P853	Olivetti Void Former Fixing Plate	3t
P859	Olivetti Void Former Fixing Plate	7t, 9t

Olivetti Void Former Fixing Plate

Part No.	Description	Type
P853	Olivetti Void Former Fixing Plate	3t
P859	Olivetti Void Former Fixing Plate	7t, 9t

The P85 Olivetti Void Former Fixing Plate can be used to fix the P83 Void Former to timber forms.



P86 Olivetti Ring Clutch

Part No.	Description	Type
P863	Olivetti Lifting Ring Clutch	3t
P865	Olivetti Lifting Ring Clutch	5t
P8610	Olivetti Lifting Ring Clutch	10t

The P86 Olivetti Ring Clutch is the compatible clutch for the P82 Olivetti Anchor.



P60 Tension Bar

Part No.	Description	Type	Bar Diameter
P603	P60 Tension Bar	3t	12mm
P605	P60 Tension Bar	5t, 7t, 9t	16mm
P6010	P60 Tension Bar	10t	20mm
P6020	P60 Tension Bar	20t	32mm

The P53 Eye Anchor must be used in conjunction with the P60 Tension Bar in order to develop its full working load limit. The P60 Tension Bar is also used for the P82 Olivetti Anchor.



concrete lifting

T-41 Ground Release Insert

The Nexus T-41 and T-81 ground release inserts are a simple and fast method of lifting concrete tilt-up wall panels into position and allows hardware to be easily released from the ground. Available in 5t and 10t capacity.



Part No.	Description	Dimension	WLL	Box Qty
T41125	T-41 Ground Release Insert	125mm	5t	20
T41150	T-41 Ground Release Insert	150mm	5t	20
T41175	T-41 Ground Release Insert	175mm	5t	20
T41200	T-41 Ground Release Insert	200mm	5t	20
T41250	T-41 Ground Release Insert	250mm	5t	20
T41300	T-41 Ground Release Insert	300mm	5t	20

*Other sizes available on request

T-81 Ground Release Insert

Ground release inserts are a simple and fast method of lifting concrete tilt-up wall panels into position



Part No.	Description	Dimension	WLL	Box Qty
T81170	T-81 Ground Release Insert	170mm	10t	15
T81175	T-81 Ground Release Insert	175mm	10t	15
T81200	T-81 Ground Release Insert	200mm	10t	15
T81250	T-81 Ground Release Insert	250mm	10t	10
T81300	T-81 Ground Release Insert	300mm	10t	10

*Other sizes available on request

T43R Ground Release Clutch

The Nexus T43R Ground Release Clutch 5t is a simple and quick method of face lifting Tilt-Up panels.

The lifting body can be quickly attached to the Nexus T-41 Face lift insert and a rope attached to the release arm allows the clutch to be released from the ground once the crane load is removed.

The Nexus T83R Ground Release Clutch is the 10t version designed to be used with Nexus T-81 face Lift insert.



Part No.	Description	Working Load Limit
T43R	Ground Release Clutch 5t	5t
T83R	Ground Release Clutch 10t	10t

T52 Edge Lift Anchor

The T52 Edge Lift Anchor is available in 2.5t and 5t comes pre-assembled complete with plastic disposable void and 6.3mm diameter shear bar.



Part No.	Description	Box Qty.
T5225	Edge Lift Complete 2.5t	40
T525	Edge Lift Complete 5t	20

P52 Foot Anchor

The Nexus P52 Foot Anchor is forged from carbon steel that obtains the minimum 2.25 factor of safety as set out in AS3850.



Part No.	Description	Box Qty	Stainless 316 available
P52135	Foot Anchor - 1.3t x 35mm	400	
P52145	Foot Anchor - 1.3t x 45mm	300	
P52155	Foot Anchor - 1.3t x 55mm	300	
P52165	Foot Anchor - 1.3t x 65mm	300	
P52185	Foot Anchor - 1.3t x 85mm	200	Yes
P521120	Foot Anchor - 1.3t x 120mm	200	Yes
P521240	Foot Anchor - 1.3t x 240mm	100	
P52255	Foot Anchor - 2.5t x 55mm	200	
P52275	Foot Anchor - 2.5t x 75mm	100	
P52285	Foot Anchor - 2.5t x 85mm	100	
P522120	Foot Anchor - 2.5t x 120mm	100	
P522170	Foot Anchor - 2.5t x 170mm	50	Yes
P522280	Foot Anchor - 2.5t x 280mm	50	
P52575	Foot Anchor - 5t x 75mm	75	
P52595	Foot Anchor - 5t x 95mm	50	
P525120	Foot Anchor - 5t x 120mm	40	Yes
P525140	Foot Anchor - 5t x 140mm	50	
P525170	Foot Anchor - 5t x 170mm	25	
P525240	Foot Anchor - 5t x 240mm	25	Yes
P52510150	Foot Anchor - 10t x 150mm	25	Yes
P52510170	Foot Anchor - 10t x 170mm	20	
P52510200	Foot Anchor - 10t x 200mm	20	
P52510250	Foot Anchor - 10t x 250mm	20	
P52510340	Foot Anchor - 10t x 340mm	10	
P5220250	Foot Anchor - 20t x 250mm	5	
P5220340	Foot Anchor - 20t x 340mm	5	
P5220500	Foot Anchor - 20t x 500mm	1	
P52201000	Foot Anchor - 20t x 1000mm	1	

P53 Eye Anchor

The Nexus P53 Eye Anchor is used in applications requiring high capacity lifting in thin sections using tension only.



Part No.	Description	Dimensions	Box Qty
P53165	Eye Anchor	1.3t x 65mm	300
P532	Eye Anchor	2.5t x 90mm	100
P535	Eye Anchor	5t x 90mm	50
P5310	Eye Anchor	10t x 180mm	15
P5320	Eye Anchor	20t x 250mm	1

P50 Lifting Clutch

The Nexus P50 Lifting Clutch is the compatible clutch for the Nexus P52 Foot Anchor and the Nexus P53 Eye Anchor.



Part No.	Description	Working Load Limit
P501	P50 Lifting Clutch	1.3t
P502	P50 Lifting Clutch	2.5t
P505	P50 Lifting Clutch	5t
P5010	P50 Lifting Clutch	10t
P5020	P50 Lifting Clutch	20t

P55 Rubber Void Former

Part No.	Description	Type
P551	Void Former Rubber	1.3t
P552	Void Former Rubber	2.5t
P555	Void Former Rubber	5t
P5510	Void Former Rubber	10t
P5520	Void Former Rubber	20t



The Nexus P55 Rubber Void Former is used to form a cavity around the head of the Nexus P52 Foot Anchor and the Nexus P53 Eye Anchor. The P55 recess void former is bolted to the form using a stud and wing nut combination (P63 Male Connector). The P64 Female Connector is used in situations where the formwork cannot be removed horizontally and must be stripped vertically.

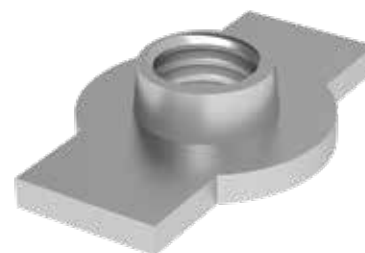
P63 Void Former Male Connector

Part No.	Description	Type
P631	Void Former Male Connector	1.3t
P632	Void Former Male Connector	2.5t
P635	Void Former Male Connector	5t
P6310	Void Former Male Connector	10t
P6320	Void Former Male Connector	20t



P64 Void Former Female Connector

Part No.	Description	Type
P641	Void Former Female Connector	1.3t
P642	Void Former Female Connector	2.5t
P645	Void Former Female Connector	5t
P6410	Void Former Female Connector	10t
P6420	Void Former Female Connector	20t



P57 Steel Void Former

Part No.	Description	Type
P571	Void Former Steel	1.3t
P572	Void Former Steel	2.5t
P575	Void Former Steel	5t
P5710	Void Former Steel	10t
P5720	Void Former Steel	20t



For concrete moulds where the same product is repetitively made, the P57 Steel Void Former is the ideal solution. Made from steel, it's long lasting and the only replacement part is the inexpensive P58 Rubber Ring.

P58 Rubber Ring for Steel Void Former

Part No.	Description	Type
P581	Rubber Ring for Steel Void Former	1.3t
P582	Rubber Ring for Steel Void Former	2.5t
P585	Rubber Ring for Steel Void Former	5t
P5810	Rubber Ring for Steel Void Former	10t
P5820	Rubber Ring for Steel Void Former	20t



P56 Articulated Void Former

Part No.	Description	Type
P561	Void Former Articulated	1.3t
P562	Void Former Articulated	2.5t
P565	Void Former Articulated	5t



The P56 Articulated Void Former is an alternative to the rubber and steel void formers. The half's rotate around a centre fixed section allowing easy insertion of the foot anchor and removal after the concrete is set.

concrete lifting

T75 Emergency Lifting Plate

The T75 Emergency Lifting Plate can be used in situations where a cast in lifter has become unusable, typically due to being misplaced or missing completely.



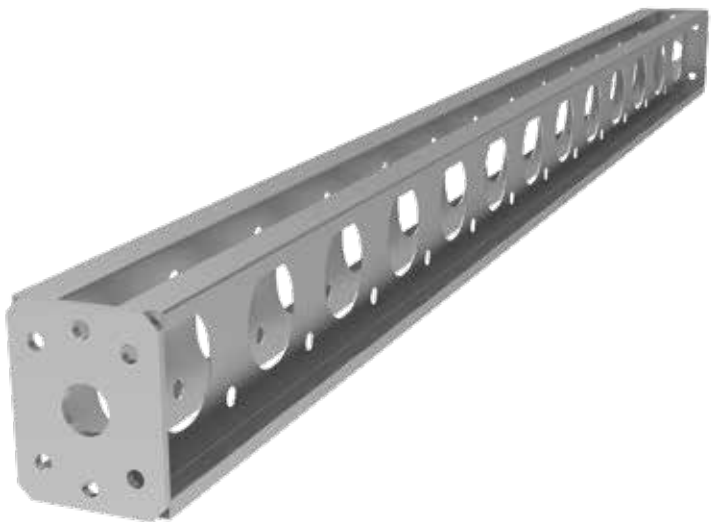
Part No.	Description
T75	Emergency Lift Plate

Strongbacks

Tilting up panels with large openings can result in large stresses applied to the concrete sections either side of the opening that standard reinforcing cannot handle.

In order to stiffen these sections Nexus Strongbacks can be used. These are bolted into the panel with strongback bolts that are screwed into previously cast Coil Ferrules or alternatively a 12mm Threaded Bar Ferrule can be cast and a Threaded Bar Wingnut can be used with a TB 12 x 540mm Starter Bar.

Strongbacks are available for hire in sizes 1800mm, 2700mm and 3600mm.



Part No.	Description
SBJB	Strongback Joining Bolt & Nut
HT63SB	Strongback Bolt
HT63WN	Strongback Wing Nut
SBPL	Strongback Plate
SB12WN	Strongback Wing Nut TB 12mm
TB12540	TB Starter Bar 12mm x 540mm

The background of the page is a photograph of a modern building's curved concrete structure. A large, semi-transparent green diagonal shape is overlaid on the left side of the image. The word "ferrules" is written in white, lowercase, sans-serif font within this green shape.

ferrules

ferrules

F43 Standard Ferrules

Designed for heavy duty anchoring, F43 Ferrule inserts are cast-in anchors. Finishes include zinc plate, galvanized, also available in stainless steel. Standard Ferrules require an N12 x 300 mm reinforcing bar to be installed through the cross hole to achieve the full design capacity.

Designed for heavy
duty anchoring



Part No.	Type	Dimension	Box Qty
F431275	Zinc	M12 x 75mm	50
F431275G	Galvanised	M12 x 75mm	50
F431296	Zinc	M12 x 96mm	50
F431296G	Galvanised	M12 x 96mm	50
F431675	Zinc	M16 x 75mm	50
F431675G	Galvanised	M16 x 75mm	50
F431696	Zinc	M16 x 96mm	50
F431696G	Galvanised	M16 x 96mm	50
F432075	Zinc	M20 x 75mm	50
F432075G	Galvanised	M20 x 75mm	50
F432096	Zinc	M20 x 96mm	50
F43209G	Galvanised	M20 x 96mm	50
F4324100	Zinc	M24 x 100mm	50
F4324100G	Galvanised	M24 x 100mm	50
F43C	Zinc	Coil x 96mm	50

F44 Star Ferrule

Also designed for heavy duty anchoring, the F44 Star Ferrule inserts are cast-in anchors available in zinc plate finish, galvanised or stainless steel. Star Ferrules do not require a cross bar to be installed to obtain the full working load. However, a cross hole is provided to allow a 300mm long bar to be installed if required for ductility performance.



Zinc Part No.	Galvanised Part No.	Stainless 316 Part No.	Dimensions	Box Qty
F441255		F441255S	M12 x 55mm	150
F441285	F441285G		M12 x 85mm	25
F441675	F441675G		M16 x 75mm	25
F441685	F441685G	F441685S	M16 x 85mm	25
F442075			M20 x 75mm	25
F442085	F442085G	F442085S	M20 x 85mm	25
F4420110	F4420110G		M20 x 110mm	25
F44C			Coil x 85mm	25

F46 Double Ended Ferrules

Double ended ferrules are the ideal solution when fixing is required on both sides of the panel. Double end ferrules require an N12 x 300 mm reinforcing bar to be installed through the cross hole to obtain the full working load.



Part No.	Dimensions	Type	Box Qty
F4612140	M12 x 140mm	Zinc	25
F4612170	M12 x 170mm	Zinc	25
F4616140	M16 x 140mm	Zinc	25
F4616165	M16 x 165mm	Zinc	25
F4616170	M16 x 170mm	Zinc	25
F4620115	M20 x 115mm	Zinc	25
F4620140	M20 x 140mm	Zinc	25
F4620165	M20 x 165mm	Zinc	25
F4620170	M20 x 170mm	Zinc	25
F4620190	M20 x 190mm	Zinc	25

Ferrule Tail Bar

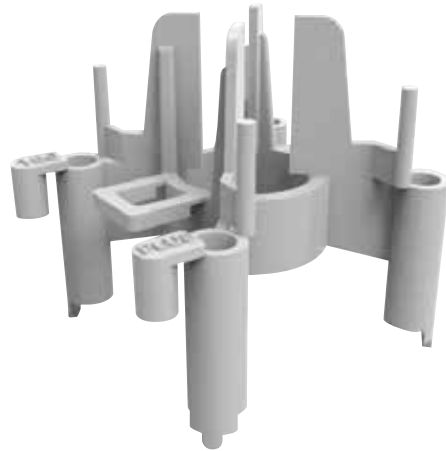
Reinforcing bar installed through cross hole of Nexus ferrules.



Part No.	Description	Dimensions
D5012300	Ferrule Tail Bar	N12 x 300mm

Ferrule Plus Chair

The Nexus Ferrule plus chair is an easy to use way of securing Nexus Standard and Star ferrules to the rear face of panels. Available with extension bases in multiple sizes to suit different thickness panels.



Part No.	Type	Dimension	Bag Qty
M38125	Ferrule Plus Chair	125mm	50
M38150	Ferrule Plus Chair	150mm	50
M38160	Ferrule Plus Chair	160mm	50
M38170	Ferrule Plus Chair	170mm	50
M38175	Ferrule Plus Chair	175mm	50
M38180	Ferrule Plus Chair	180mm	50
M38200	Ferrule Plus Chair	200mm	50
M38EXT80	Ferrule Plus Chair Extension Base	80mm	50
M38EXT85	Ferrule Plus Chair Extension Base	85mm	50
M38EXT90	Ferrule Plus Chair Extension Base	90mm	50
M38EXT95	Ferrule Plus Chair Extension Base	95mm	50
M38EXT	Ferrule Plus Chair Extension Base	100mm	50
M371	Ferrule Plus Chair Combo Dowel		200

Ferrules Combo Dowels

Used to anchor Ferrule Plus chairs into location



Part No.	Description	Bag Qty
M371	Ferrule Combo Dowel	200

Ferrule Antenna Cap

Pushes on and protects ferrule thread whilst pouring concrete.



Part No.	Description	Dimensions	Colour	Bag Qty
M4212	Ferrule Antenna Cap	M12	Red	100
M4216	Ferrule Antenna Cap	M16	Green	100
M4220	Ferrule Antenna Cap	M20	Blue	100
M4224	Ferrule Antenna Cap	M24	Yellow	100

Ferrule Antenna Cap - Screw In

Screws in and protects ferrule thread whilst pouring concrete.



Part No.	Description	Dimensions	Colour	Bag Qty
M4912	Ferrule Antenna Cap - Screw In	M12	Red	100
M4916	Ferrule Antenna Cap - Screw In	M16	Green	100
M4920	Ferrule Antenna Cap - Screw In	M20	Blue	100
M49C	Ferrule Antenna Cap - Screw In	Coil	Brown	100

Ferrule Nailing Plate

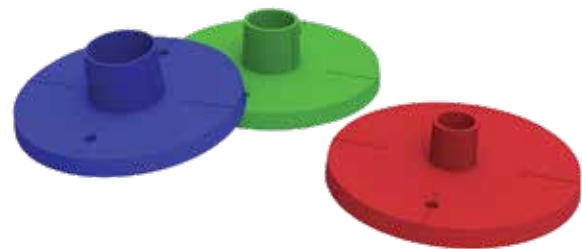
Threaded plate locates ferrules to timber form.



Part No.	Description	Type mm	Bag Qty
M4112	Ferrule Nailing Plate	M12	100
M4116	Ferrule Nailing Plate	M16	100
M4120	Ferrule Nailing Plate	M20	100
M4124	Ferrule Nailing Plate	M24	100
M41C	Ferrule Nailing Plate	Coil	100

Ferrule Push ON Locator

Push fit, with option to come complete with double-sided adhesive spot.



Part No.	Description	Size	Diameters mm
M4616	Ferrule Push On Locator	M16	60
M4620	Ferrule Push On Locator	M20	60
M4624	Ferrule Push On Locator	M24	60
M4616DBL	Ferrule Push On Locator with Double Sided Spot	M16	60
M4620DBL	Ferrule Push On Locator with Double Sided Spot	M20	60

Double Sided Spots

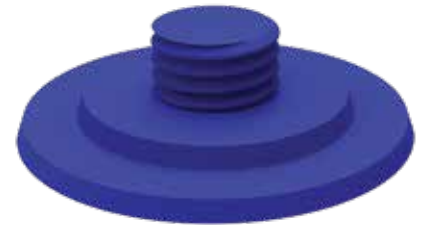
Part No.	Description	Per Roll
T2158	58mm	800

Adhesive spot to stick Ferrule Push-on locators to precast beds.



Ferrule Glue On Plate

Part No.	Description	Type mm	Bag Qty
M4312	Ferrule Glue On Plate	M12	100
M4316	Ferrule Glue on Plate	M16	100
M4320	Ferrule Glue on Plate	M20	100
M4324	Ferrule Glue on Plate	M24	100



Threaded fit, to be used with a double sided adhesive spot.

Threaded Bar Ferrule

Part No.	Description	Type	Type
F541286	Threaded Bar Star Ferrule	N12 x 86mm	25
F5416110	Threaded Bar Star Ferrule	N16 x 110mm	25



Nexus Threaded Bar Star Ferrules are available in two sizes to suit 12mm and 16mm Threaded Reinforcing Bars. Easily installed in the near face, far face and side of tilt-up and precast concrete panels.

Threaded Bar Coupler

Part No.	Description	Type	Type
F47TB12	Threaded Bar Coupler	N12 x 100mm	25
F47TB16	Threaded Bar Coupler	N16 x 120mm	25
F47TB20	Threaded Bar Coupler	N20 x 150mm	25



Designed as an in-line full strength connector for two lengths of the reinforcing Threaded Bar screwed in with minimal effort to achieve the full breaking strength of the reinforcing bar.

Threaded Bar Antenna Cap

Pushes on and protects ferrule thread whilst pouring concrete.



Part No.	Type	Bag QTY
M42TB12	12mm	100
M42TB16	16mm	100
M42TB20	20mm	100

Threaded Bar Nailing Plate

Threaded plate locates ferrules to form.



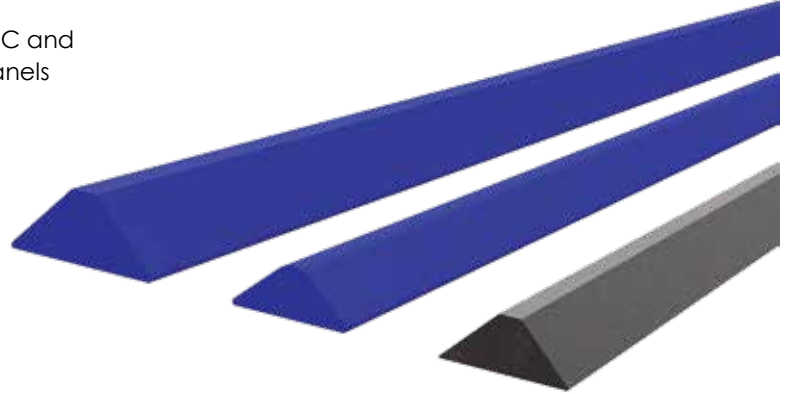
Part No.	Type	Part No.	Bag Qty
M41TB12	12mm	M41TB12	100
M41TB16	16mm	M41TB16	100
M41TB20	20mm	M41TB20	100
M41TB25	25mm	M41TB25	100

The background features a complex geometric composition. A large, semi-transparent blue triangle is positioned on the left side, pointing towards the center. The rest of the background is composed of various shades of brown and black, with textures that resemble wood grain and architectural elements like beams and corners. The overall effect is modern and industrial.

plastic profiles

Chamfer

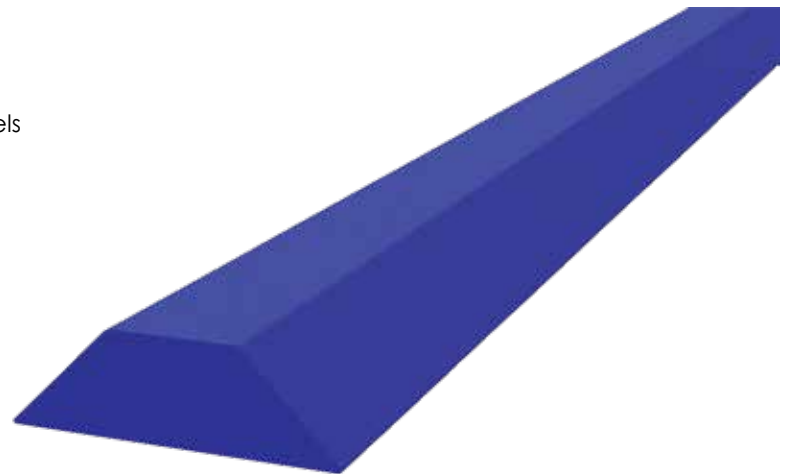
Nexus Chamfer is made from solid extruded PVC and used to form chamfered edges to concrete panels and columns.



Part No.	Description	Dimensions	Pack Qty metres
M901229	Chamfer	12mm x 2.9m	188.5
M901929	Chamfer	19mm x 2.9m	101.5
S1112	Chamfer Steel	12mm x 4m	40

False Joint

Creates a decorative groove in concrete panels made from extruded PVC.



Part No.	Description	Dimensions	Pack Qty metres
M92404	40mm	40mm x 4m	60
M92404DST	40mm with Double side tape	40mm x 4m	40
M92503	50mm	50mm x 3m	60

plastic profiles

Winged Fillet

Part No.	Description	Dimensions	Pack Qty metres
M929W	Winged Fillet	12mm x 2.9m	104.4m



Fillet Cutters

Part No.	Description
T122	Fillet Mitre Shear Cutter
T123	Fillet Mitre Shear Blades



For cutting chamfer and false joint, replacement blades available.

Double Sided Tape

Part No.	Description	Size
T2108	Double Sided tape	8mm x 50m
T2112	Double Sided tape	12mm x 50m
T2025	Double Sided tape	20mm x 25m
T2137	Double Sided tape	37mm x 50m
T2150	Double Sided tape	50mm x 50m



Ideal for sticking chamfer and false joint to precast beds and formwork.



spiral duct

spiral duct

Spiral Duct

Spiral Duct is a metal grout tube typically used where grout tubes are cast in concrete precast panels.



Part No.	Description	Diameter	Length metres	Pack Qty metres
T234025	Spiral Duct	40mm	2.5	300
T235025	Spiral Duct	50mm	2.5	250
T235058	Spiral Duct	50mm	5.8	580
T236025	Spiral Duct	60mm	2.5	250
T236058	Spiral Duct	60mm	5.8	580
T237025	Spiral Duct	70mm	2.5	250
T237058	Spiral Duct	70mm	5.8	580
T238025	Spiral Duct	80mm	2.5	250

Other sizes and lengths available

Spiral Duct Coupler

Part No.	Description	Suit Spiral Duct	Length
T2650C	Spiral Duct Coupler	50mm	150mm
T2660C	Spiral Duct Coupler	60mm	160mm
T2670C	Spiral Duct Coupler	70mm	160mm
T2680C	Spiral Duct Coupler	80mm	160mm

Joins two lengths of spiral duct.

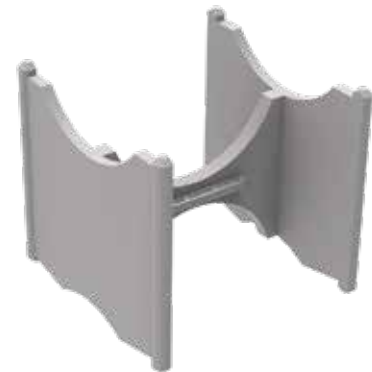
PVC Elbow

Part No.	Description	Dimensions
M664	PVC Elbow	50mm
M6665	PVC Elbow	65mm
M668	PVC Elbow	70mm
M669	PVC Elbow	80mm



Grout Tube Bar Chair

Part No.	Description	Dimensions
M603	Grout Tube Bar Chair	Suit 50 to 70mm Spiral / Tube



Used to chair 50mm to 70mm Spiral Duct or Grout Tube.

PVC Pipe Locator

Part No.	Description	Dimensions
M666	PVC Pipe Locator Multi Fit	50/60mm
M663	PVC Pipe Locator Red	50mm
M665	PVC Pipe Locator	70mm



Filament Tape Spot



Part No.	Description	Dimensions
B670	Filament Tape Spot	108mm

A low-angle, upward-looking photograph of a modern building's exterior. The facade is characterized by a complex, repeating geometric pattern of white, angular, cantilevered balconies or overhangs that create a series of sharp, dark shadows and bright highlights. The perspective draws the eye towards the top of the frame. A large, semi-transparent yellow triangle is overlaid on the left side of the image, serving as a background for the title text.

reinforcing support chairs

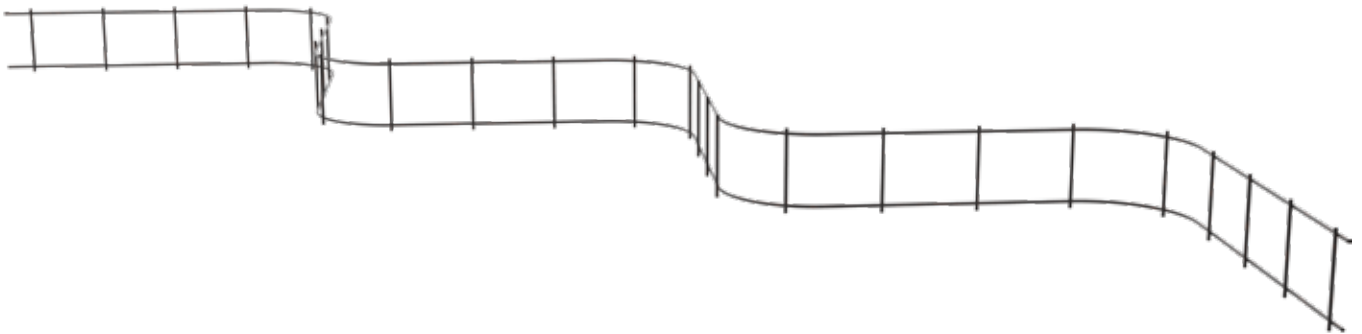
reinforcing support chairs

Snake Rail

Snake Rail is used as a spacer between top and bottom layer mesh in panels and slabs.

Quick and easy to use, it reduces footprints on precast panels.

Bent shape for stability.



Part No.	Description	Dimensions: 2 metre effective length		Pack Quantity
S1040	Snake Rail	40mm		15 Lengths
S1050	Snake Rail	50mm		15 Lengths
S1060	Snake Rail	60mm		15 Lengths
S1070	Snake Rail	70mm		15 Lengths
S1080	Snake Rail	80mm		15 Lengths
S1090	Snake Rail	90mm		15 Lengths
S1110	Snake Rail	110mm		15 Lengths
S1120	Snake Rail	120mm		15 Lengths

reinforcing support chairs

Plastic Deck Rail

Part No.	Description	Dimensions
M1420	Plastic Deck Rail	20mm x 760mm
M1425	Plastic Deck Rail	25mm x 760mm
M1430	Plastic Deck Rail	30mm x 760mm
M1440	Plastic Deck Rail	40mm x 760mm
M1445	Plastic Deck Rail	45mm x 760mm
M1450	Plastic Deck Rail	50mm x 760mm
M1460	Plastic Deck Rail	60mm x 760mm
M1475	Plastic Deck Rail	75mm x 760mm



Ideal for precast and tilt-up panels, quick and easy to use. Can be clipped together to provide continuous spacing for reinforcing mesh.

Top Layer Mesh Chairs

Part No.	Description	Dimensions	Pack Qty
M1390	Top Layer Mesh Chairs	90/100mm	50
M13110	Top Layer Mesh Chairs	110/120mm	50
M13130	Top Layer Mesh Chairs	130/140mm	50
M13135	Top Layer Mesh Chairs	135/145mm	50
M13150	Top Layer Mesh Chairs	150/160mm	50
M13170	Top Layer Mesh Chairs	170/180mm	50
M13190	Top Layer Mesh Chairs	190/200mm	50



Bottom Layer Mesh Chairs

Part No.	Description	Dimensions	Pack Qty
M1025	Bottom Layer Mesh Chairs	25/ 30mm	100
M1035	Bottom Layer Mesh Chairs	35/40mm	100
M1045	Bottom Layer Mesh Chairs	45/50mm	100



reinforcing support chairs

Panel Chairs

Part No.	Description	Dimensions	Pack Qty
M1140	Panel Chairs	30 / 40mm	100
M1150	Panel Chairs	50 / 60mm	100
M1165	Panel Chairs	65 / 75mm	100
M1190	Panel Chairs	90 / 100mm	100



Circular Bar Chairs

Part No.	Description	Bag Qty
M22820	Circular Bar Chair 20mm - Suits 8 - 12mm	100
M22825	Circular Bar Chair 25mm - Suits 8 - 12mm	100
M22830	Circular Bar Chair 30mm - Suits 8 - 12mm	100
M221630	Circular Bar Chair 30mm - Suits 16 - 20mm	100
M22840	Circular Bar Chair 40mm - Suits 8 - 12mm	100
M221640	Circular Bar Chair 40mm - Suits 16 - 20mm	100
M22850	Circular Bar Chair 50mm - Suits 8 - 12mm	100



Fast Clip Mesh Chairs

Part No.	Description	Dimensions	Pack Qty
M1220	Fast Clip Mesh Chair	20mm	100
M1225	Fast Clip Mesh Chair	25mm	100
M1230	Fast Clip Mesh Chair	30mm	100
M1232	Fast Clip Mesh Chair	32mm	100
M1235	Fast Clip Mesh Chair	35mm	100
M1240	Fast Clip Mesh Chair	40mm	100
M1250	Fast Clip Mesh Chair	50mm	100
M1260	Fast Clip Mesh Chair	60mm	100
M1265	Fast Clip Mesh Chair	65mm	100
M1275	Fast Clip Mesh Chair	75mm	100



reinforcing support chairs

Fast Clip Bar Chairs



Part No.	Description	Dimensions	Pack Qty
M1715	Fast Clip Bar Chair Small	15mm	100
M1720	Fast Clip Bar Chair Small	20mm	100
M1725	Fast Clip Bar Chair Small	25mm	100
M1730	Fast Clip Bar Chair Small	30mm	100
M1732	Fast Clip Bar Chair Small	32mm	100
M1735	Fast Clip Bar Chair Small	35mm	100
M1740	Fast Clip Bar Chair Small	40mm	100
M1745	Fast Clip Bar Chair Small	45mm	100
M1750	Fast Clip Bar Chair Small	50mm	100
M1760	Fast Clip Bar Chair Small	60mm	100
M1765	Fast Clip Bar Chair Small	65mm	100
M1775	Fast Clip Bar Chair Small	75mm	100
M1825	Fast Clip Bar Chair Large	25mm	100
M1830	Fast Clip Bar Chair Large	30mm	100
M1840	Fast Clip Bar Chair Large	40mm	100
M1850	Fast Clip Bar Chair Large	50mm	100
M1865	Fast Clip Bar Chair Large	65mm	100

A photograph of a modern architectural interior featuring sharp geometric lines, concrete walls, and a staircase. A large, semi-transparent red triangle is overlaid on the left side of the image, serving as a background for the title text.

chemicals

Bondbreaker

Nexus supplies both solvent based and water based bondbreakers. Considered to be the best and most widely used bondbreakers on the Australian market.



Part No.	Description	Litre
Surelift20	Surelift Solvent Based	20
Surelift208	Surelift Solvent Based	208

Sure-Lift is a reactive and membrane forming premium bond breaker for tilt-up concrete construction.

Part No.	Description	Litre
SPECWB20	Spec Chem Water Based	20
SPECWB208	Spec Chem Water Based	208

Spec Tilt WB is a chemically reactive water based tilt-up bond breaker specially designed to provide a clean and easy lift of concrete tilt-up panels.

Spray Pump & Accessories



Part No.	Description
T33C	Spray Pump
T32	Spray Pump Nozzle
T37	Spray Pump Extension Wand

Mould Oil

Anglomoil Mould Oil and Mould Oil Light has been specially formulated to ensure clean concrete release from steel, aluminium, plywood or composite forms. It minimises surface irregularities, reduces voids and helps protect forms and formwork from rust.



Part No.	Description	Litres
JANGLO20	Anglomoil Mould Release Oil	20
JANGLO200	Anglomoil Mould Release Oil	200
JANGLOLIGHT20	Anglomoil LIGHT Mould Release Oil	20
JANGLOLIGHT200	Anglomoil LIGHT Mould Release Oil	200

formwork

Nexus Easyform

Nexus Easyform is an easy to use stack casting system for making precast panels on site.

Precast quality panels made on site

- ✓ Requires no timber or nailing
- ✓ Stack cast any size panel with ease
- ✓ Re-usable and durable for many years of service
- ✓ Concrete pouring is much easier with no obstructions
- ✓ Requires minimal training
- ✓ Lightweight



Part No.	Description	Dimensions	Qty
T60126	Nexus Easyform	5.8m x 125mm	per length
T60151	Nexus Easyform	5.8m x 150mm	per length
T60171	Nexus Easyform	5.8m x 170mm	per length
T60176	Nexus Easyform	5.8m x 175mm	per length
T60181	Nexus Easyform	5.8m x 180mm	per length
T60201	Nexus Easyform	5.8m x 200mm	per length

Made from structural grade aluminium Easyform is easier to handle and store than traditional timber ply formwork.



Nexus Easyform Components



T622

Part No.	Description
T622	Ground Bracket



T623

Part No.	Description
T623	Climbing Bracket



T612

Part No.	Description
T612	Corner Bracket



T613

Part No.	Description
T613	Joiner



T615

Part No.	Description
T615	Track Cleaner



T621

Part No.	Description
T621	Spring Bolt



T626

Part No.	Description
T626	Socket Head Bolt



T627

Part No.	Description
T627	Purlin Bolt



F451265

Part No.	Description
F451265	Bent End Ferrule

A black and white photograph of a modern building facade with balconies and large windows. A large, semi-transparent blue triangle is overlaid on the left side of the image, pointing towards the right. The text 'panel connections' is written in white, lowercase letters within this blue area.

panel connections

panel connections

Nexus Cast – In Plate

The Nexus Cast-in plate system is a fully engineered range of concrete cast-in plates for easy installation for panel to steel, panel to panel and panel to slab connections.

The Nexus Cast-in plate is anchored to the concrete by embedded studs butt-welded onto the rear of the plate.

The unique clip-on chair can be cut to length to allow for various thickness panels.



Part No.	Dimensions
NX1	200 x 200 x 12mm
Description	
NX1	



Part No.	Dimensions
NX1F	200 x 200 x 12mm
Description	
NX1F	



Part No.	Dimensions
NX2	200 x 200 x 12mm
Description	
NX2	



Part No.	Dimensions
NX2F	200 x 200 x 12mm
Description	
NX2F	



Part No.	Dimensions
NX3	200 x 200 x 12mm
Description	
NX3	

panel connections



Part No.	Dimensions
NX3R	200 x 200 x 16mm
Description	
NX3 Recessed	



Part No.	Dimensions
NX4	400 x 200 x 16mm
Description	
NX4	



Part No.	Dimensions
NX4R	400 x 200 x 16mm
Description	
NX4 Recessed	



Part No.	Dimensions
NX5	500 x 200 x 16mm
Description	
NX5	



Part No.	Dimensions
NX5R	500 x 200 x 16mm
Description	
NX5 Recessed	



Part No.	Dimensions
NXPE	200 x 100 x 12mm
Description	
Nexus Panel Edge Plate	



Part No.	Dimensions
NXSE	200 x 125 x 12mm
Description	
Nexus Slab Edge Plate	



Part No.	Dimensions
NXPL	200 x 200 x 12mm
Description	
Nexus Plate Stud Chair	



Part No.	Dimensions
NXPLSB	200 x 200 x 12mm
Description	
Nexus Plate Stud Chair Stubby	

panel connections

Concrete Cast – In Plate

Concrete Cast-In Plates are used for easy installation for panel to steel or panel to panel connections.

Nexus offers Cast -In plates with welded legs as an option to position the plate at the desired height.



Part No.	Dimensions
C20CP1	200 x 200 x 12mm
Description	
CP1 Cast Plate	



Part No.	Dimensions
C20CP1F	200 x 200 x 12mm
Description	
CP1F Cast Plate with Ferrule	



Part No.	Dimensions
C20CP1FL	200 x 200 x 12mm
Description	
CP1FL Cast Plate with Ferrule & Legs to suit 150mm panel	



Part No.	Dimensions
C20CP2	200 x 200 x 12mm
Description	
CP2 Cast Plate	

panel connections



Part No.	Dimensions
C20CP2F	200 x 200 x 12mm
Description	
CP2F Cast Plate with Ferrule	



Part No.	Dimensions
C20CP2FL	200 x 200 x 12mm
Description	
CP2FL Cast Plate with Ferrule & Legs to suit 150mm panel	



Part No.	Dimensions
C20CP3	300 x 200 x 16mm
Description	
CP3 Cast Plate	



Part No.	Dimensions
C20CP3F	300 x 200 x 16mm
Description	
CP3F Cast Plate with Ferrule	



Part No.	Dimensions
C20CP3FL	300 x 200 x 16mm
Description	
CP3FL Cast Plate with Ferrule & Legs to suit 150mm panel	



Part No.	Dimensions
C20CP33	300 x 300 x 16mm
Description	
CP33 Cast Plate	



Part No.	Dimensions
C20CP4	400 x 200 x 16mm
Description	
CP4 Cast Plate	



Part No.	Dimensions
C20CP5	500 x 200 x 16mm
Description	
CP5 Cast Plate	

panel connections

Fish Connection Plate

Part No.	Description	Finish	Dimensions
T2236	Fish Connection Plate	Black	100 x 330 x 12mm
T2236G	Fish Connection Plate	Galvanised	100 x 330 x 12mm



Panel to panel fish connection plate.

Angle Connection Plate

Part No.	Description	Finish	Dimensions
T2243	Angle Connection Plate	Black	100 x 150 x 215 x 12mm
T2243G	Angle Connection Plate	Galvanised	100 x 150 x 215 x 12mm



Panel to panel corner connection plate.

Panel Connection Clip

Part No.	Description	Finish	Dimensions
T202	Panel Connection Clip	Galvanised	75 x 150 x 12mm
T204	Panel Connection Clip	Galvanised	75 x 200 x 12mm



Panel to steel flange connection clips.

Starter Bars

Part No.	Description	Dimension
D5112600	Starter Bar Deformed	N12 x 600mm
D5116600	Starter Bar Deformed	N16 x 600mm
D5120600	Starter Bar Deformed	N20 x 600mm



Provide connections between precast concrete panels and floor slabs. Other sizes available on request.

TB Starter Bar

Part No.	Description	Dimension
TB12540	TB Starter Bar	12mm x 540mm
TB16660	TB Starter Bar	16mm x 660mm



Provide connections between precast concrete panels and floor slabs.

Dowel Bar

Part No.	Description	Dimension
D5016150	Dowel Bar	N16 x 150mm
D5016200	Dowel Bar	N16 x 200mm
D5016150	Dowel Bar	N16 x 150mm
D5020150	Dowel Bar	N20 x 150mm
D5020150G	Dowel Bar - Galvanised	N20 x 150mm
D5020200	Dowel Bar	N20 x 200mm
D5024150	Dowel Bar	N24 x 150mm



A photograph of a modern building's exterior, featuring a series of horizontal metallic panels and large glass windows. A large, semi-transparent green diagonal shape is overlaid on the left side of the image, serving as a background for the text.

caulking & repair

Aftek Fyreflex

Part No.	Description	Colour	Sausage	Bag Qty
N129	Aftek Fyreflex	Grey	600ml	20kg



Aftek Fyreflex fire rated intumescent sealant is a water based acrylic sealant suitable for use in internal and external expansion joints and for penetrations requiring a fire-resistant seal.

Aftek Flex - Pro PU

Part No.	Description	Colour	Sausage	Bag Qty
N129F	Aftek Flex - Pro PU	Grey	600ml	20kg



Aftek Flex-Pro PU is a one component high performance construction joint, thixotropic moisture curing polyurethane sealant / adhesive with high mechanical strength and excellent resistance to weathering.

Repair Mortar

Aftek Fairing Coat Mortar is a fine textured, fast setting, cementitious mortar, specifically formulated for repair of damaged concrete where only a thin layer is required.

Aftek Repair Mortar Penapatch Panel LW is a fine filled, polymer modified, cementitious mortar, specifically formulated to provide cover for joiner plates in tilt slab or precast construction and repair of damaged concrete.



Part No.	Description	Colour	Bag size
N115	Aftek Repair Mortar Fairing Coat	Grey	20kg
N115OW	Aftek Repair Mortar Fairing Coat - Off White	Off White	20kg
N120	Repair Mortar LW	Grey	10kg
N120OW	Repair Mortar LW - Off White	Off White	10kg

Backing Rod

Part No.	Description	Dimensions
N131	Backing Rod	20 x 30mm x 2.15m
N131A	Backing Rod with Adhesive	20 x 30mm x 2m
N131B	Backing Rod	30 x 30mm x 2m

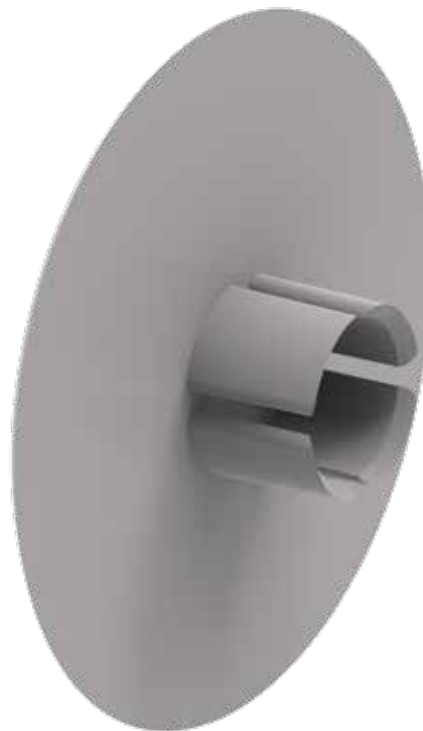


GR Patch Cap & Ferrule Patch Cap

T45 Patch Caps are simply pushed on to Nexus T-41 ground release lifters after panels are installed, removes the need for grouting over lifters.

M45 Ferrule Patch Caps are inserted into bracing ferrules once braces are removed, no need for patching.

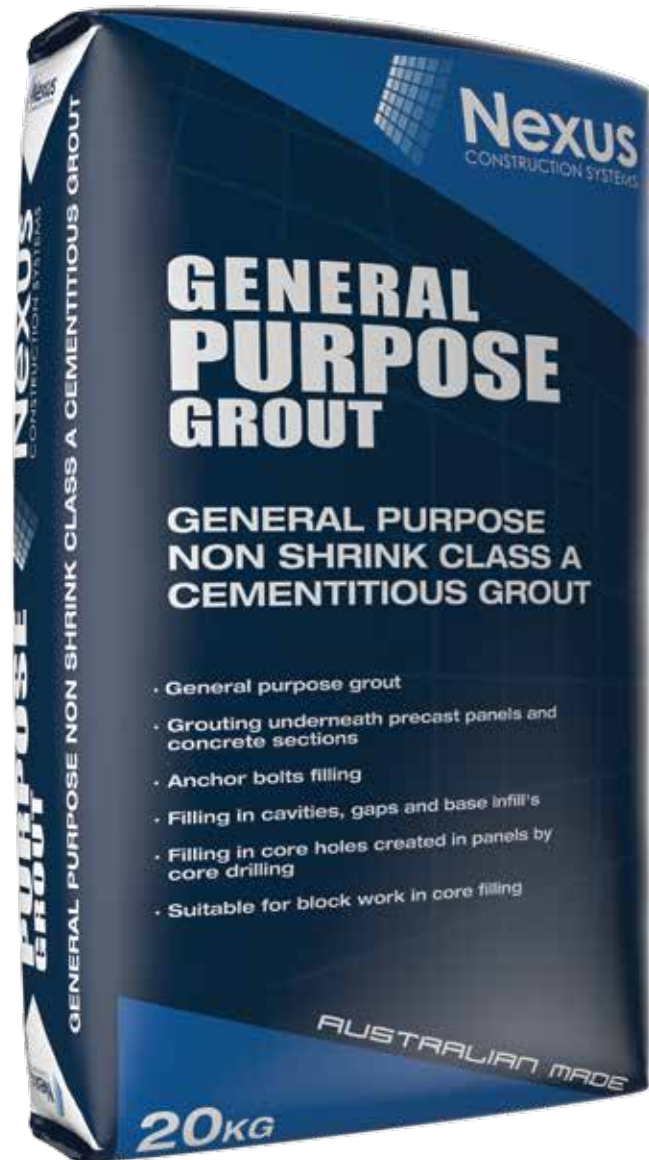
M45TB Ferrule TB Patch Caps inserted into TB strongback ferrules once strongbacks have been removed.



Part No.	Description	Dimensions	Type	Bag Qty
T45	Ground Release Patch Cap	150mm	Suits T-41 Lifter	100
M45	Ferrule Patch Cap	75mm diameter	Suits 20mm Ferrule	100
M45TB	Ferrule Threaded Bar Patch Cap	75mm diameter	Suits TB 12mm Ferrule	100

General Purpose Grout

Non-shrink Class A Cementitious Grout. Used for grouting under precast panels, filling in cavities and gaps.



Part No.	Description	Bag Qty
N111	General Purpose Grout	20kg

A low-angle photograph of a modern building's concrete structure, featuring a large red geometric overlay that frames the central text. The background shows a concrete wall with a rectangular opening and a dark horizontal beam.

miscellaneous

Tie Wire

Part No.	Description	Dimensions
D5414	Tie Wire Black	1.4mm x 100m
D54157	Tie Wire Black	1.57mm x 95m



Bar Caps

Part No.	Description	Size	Bag Qty
M302	Bar Caps	10mm	500

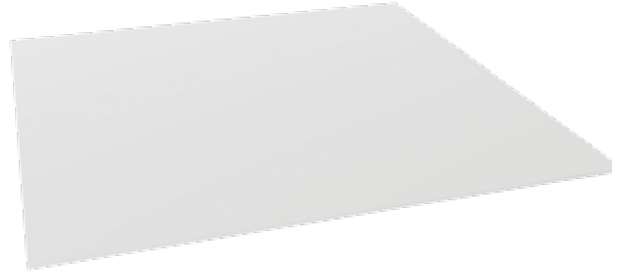
Polystyrene Sheets



Part No.	Description	Size
M8620030	Polystyrene Sheet	200mm x 200mm x 30mm
M86240020	Polystyrene Sheet	1200mm x 2400mm x 20mm
M86240030	Polystyrene Sheet	1200mm x 2400mm x 30mm
M86240035	Polystyrene Sheet	1200mm x 2400mm x 35mm
M86240050	Polystyrene Sheet	1200mm x 2400mm x 50mm

Aluminium Sheet

Part No.	Description	Size
ALU300150	Aluminium Sheet	3m x 1.5m x 3mm



Panel ID Plates

Panel Identification Plates are cast into panels, available in multiple colours for easy project identification.



Part No.	Description	Dimensions	Colour	Box Qty
CIDPLLB	Panel ID Plate Slim	180 x 75mm	Light Blue	200
CIDPLLG	Panel ID Plate Slim	180 x 75mm	Light Grey	200
CIDPLOR	Panel ID Plate Slim	180 x 75mm	Orange	200
CIDPLPI	Panel ID Plate Slim	180 x 75mm	Pink	200
CIDPLLP	Panel ID Plate Slim	180 x 75mm	Purple	200
CIDPLR	Panel ID Plate Slim	180 x 75mm	Red	200
CIDPLW	Panel ID Plate Slim	180 x 75mm	White	200
CIDPL	Panel ID Plate Slim	180 x 75mm	Yellow	200
CIDPLBR	Panel ID Plate Slim	180 x 75mm	Brown	200
CIDPBG	Panel ID Plate Slim	180 x 75mm	Green	200



installation

brace hire

The Nexus Panel Brace is used to temporarily support the precast or tilt-up panel in its final position while connections are installed.

Nexus is developing better bracing solutions to save you time, money and risk.

Nexus can
handle any size
project from small
factories to high-
rise and other
major projects.

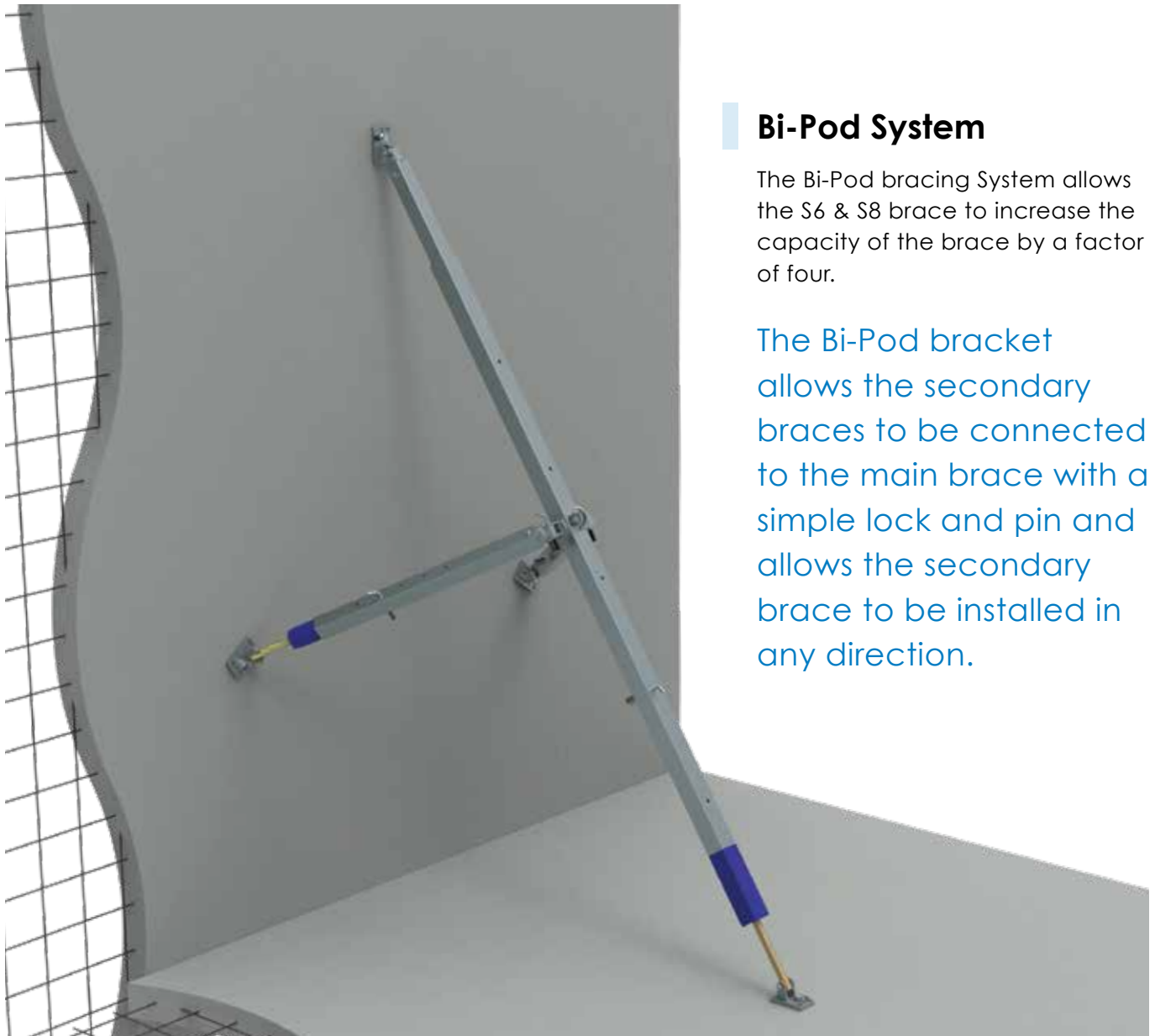
Double Bolt Brace Foot

Perfect for high capacity bracing.

In many situations the weakest link in the bracing system is the structural connection to the floor slab or deadman footing.

The Double Bolt Brace Foot uses two bolts to increase the capacity of the bracing system and reduce the overall number of braces required.





Bi-Pod System

The Bi-Pod bracing System allows the S6 & S8 brace to increase the capacity of the brace by a factor of four.

The Bi-Pod bracket allows the secondary braces to be connected to the main brace with a simple lock and pin and allows the secondary brace to be installed in any direction.

Brace Type	Closed (mm)	Open (mm)
S0	1450	2200
S1	2500	3700
S2	3500	5400
S3	4600	6700
S5	6800	9400
S6	6500	9700
S8	8700	11600

installation

The self-cleaning thread on Nexus braces means no more jamming when adjusting braces.

The curved profile of the coil thread means concrete breaks away from the thread more easily compared to the square thread.



key points

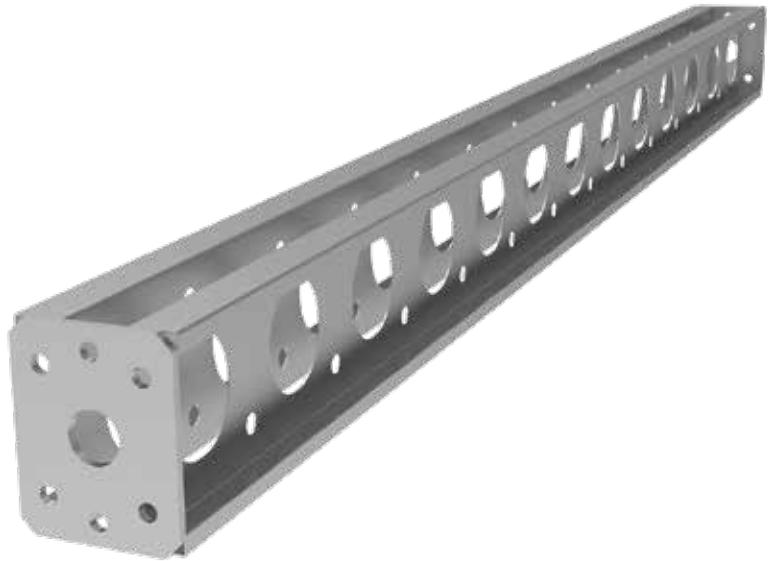
- / Large stocks available
- / Competitive rates
- / Reliable pickup and delivery service
- / Braces for oversize and non-standard panels
- / Fully inspected and maintained prior to despatch as per National Code A of Practice requirements.
- / Certified bracing solutions available
- / Designed tested and manufactured by Nexus Construction Systems to Australian Standard As3850

Strongbacks

Tilting up panels with large openings can result in large stresses applied to the concrete sections either side of the opening that standard reinforcing cannot handle.

In order to stiffen these sections Nexus Strongbacks can be used. These are bolted into the panel with strongback bolts that are screwed into previously cast Coil Ferrules or alternatively a 12mm Threaded Bar Ferrule can be cast and a Threaded Bar Wingnut can be used with a TB 12 x 540mm Starter Bar.

Strongbacks are available for hire in sizes 1800mm, 2700mm and 3600mm.



Part No.	Description
SBJB	Strongback Joining Bolt & Nut
HT63SB	Strongback Bolt
HT63WN	Strongback Wing Nut
SBPL	Strongback Plate
SB12WN	Strongback Wing Nut TB 12mm
TB12540	TB Starter Bar 12mm x 540mm

Emergency Strongback Bolt

The Emergency Strongback Bolt is a post installed bolt which has a special head with an incorporated female thread that is compatible with the Nexus Strongback Bolt.

Used in situations where the strongback ferrule has been misplaced, not installed or tipped over.



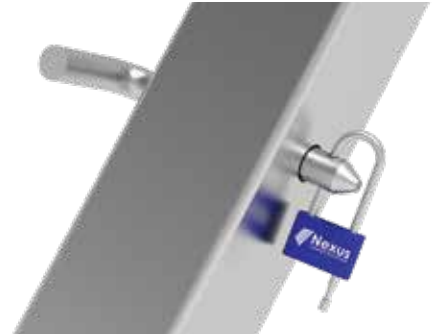
Part No.	Description	Size	Box Qty
NXESB20115	Emergency Strongback Bolt	20 x 115mm	25

installation

Disposable Brace Lock & Pin

Part No.	Description
T134	Disposable Brace Lock
T135	Brace Pin for Disposable Lock

Tamper proof, easy to use, National Code of Practice compliant.



Bracing Bolt

Part No.	Description	Box Qty
NXBB20115	Nexus Bracing Bolt 20mm x 115mm	25
T51196046	Coil Bolt 3/4" x 60mm Grade 4.6	60
T5206046	Bolt M20 x 60mm Grade 4.6	60

Nexus Bracing Bolt has been specifically designed for use as a post installed anchor on braces supporting precast and tilt-up concrete panels. The Nexus Bracing Bolt has been tested in accordance with the requirements of the AS3850.1-2015.



Shim Packers

Nexus Shim Packers are Australian made, AS3850.1:2015 compliant with a 20t WLL.



Part No.	Thickness	Dimensions	Colour	Qty
M811	1mm	150mm x 100mm	Brown	200
M812	2mm	150mm x 100mm	Blue	200
M813	3mm	150mm x 100mm	Green	100
M815	5mm	150mm x 100mm	Yellow	100
M8110	10mm	150mm x 100mm	Black	40
M8115	15mm	150mm x 100mm	Grey	40
M8120	20mm	150mm x 100mm	White	30

Quick Anchor

The Nexus Quick Anchor (Pat. App) cast-in brace foot anchor permits the temporary and safe use of low strength concrete on-site during the construction phase to support temporary braces.

The Quick Anchor comes pre-assembled at various heights to suit various slab thicknesses.



Part No.	Closed (mm)	Suits Slab	Box Qty
F50125	Quick Anchor	125mm	10
F50150	Quick Anchor	150mm	10
F50160	Quick Anchor	160mm	10
F50170	Quick Anchor	170mm	10
F50175	Quick Anchor	175mm	10
F50180	Quick Anchor	180mm	10
F50200	Quick Anchor	200mm	10
F50220	Quick Anchor	220mm	10
F50225	Quick Anchor	225mm	10

Fish Connection Plate

Part No.	Description	Finish	Dimensions
T2236	Fish Connection Plate	Black	100 x 330 x 12mm
T2236G	Fish Connection Plate	Galvanised	100 x 330 x 12mm



Panel to panel fish connection plate.

Angle Connection Plate

Part No.	Description	Finish	Dimensions
T2243	Angle Connection Plate	Black	100 x 150 x 215 x 12mm
T2243G	Angle Connection Plate	Galvanised	100 x 150 x 215 x 12mm



Panel to panel corner connection plate.

Panel Connection Clip

Part No.	Description	Finish	Dimensions
T202	Panel Connection Clip	Galvanised	75 x 150 x 12mm
T204	Panel Connection Clip	Galvanised	75 x 200 x 12mm



Panel to steel flange connection clips.

Starter Bars

Part No.	Description	Dimension
D5112600	Starter Bar Deformed	N12 x 600mm
D5116600	Starter Bar Deformed	N16 x 600mm
D5120600	Starter Bar Deformed	N20 x 600mm



Provide connections between precast concrete panels and floor slabs.

Nexus Extra Heavy-Duty Pry Bar

Part No.	Description	Dimension
A95EXHDPB	Nexus Extra Heavy-Duty Pry Bar	1545mm



Used for moving and positioning loads.

Doughnut Foam

Part No.	Description	Dimension
N125	Foam Doughnut	100 x 50 x 30mm
N126	Foam Doughnut	120 x 70 x 40mm



For grout tube sealing when pouring grout in concrete panels.

index

Part Name	Page No.
Aftek Fyreflex	55
Aftek Flex - Pro PU	55
Aluminium Sheet	60
Angle Connection Plate	52, 68
Articulated Void Former	17
Backing Rod	56
Bar Caps	59
Bi-Pod System	63
Bondbreaker	41
Bottom Layer Mesh Chairs	37
Brace Hire	62
Bracing Bolt	66
Chamfer	29
Circular Bar Chairs	38
Concrete Cast – In Plate	50
Disposable Brace Lock & Pin	66
Double Bolt Brace Foot	62
Double Ended Ferrules	22
Double Sided Spots	25
Double Sided Tape	30
Doughnut Foam	69
Dowel Bar	53
Edge Lift Anchor	13
Emergency Lifting Plate	18
Emergency Strongback Bolt	65
Eye Anchor	15
False Joint	29
Fast Clip Bar Chairs	39
Fast Clip Mesh Chairs	38
Ferrule Antenna Cap	24
Ferrule Antenna Cap - Screw In	24
Ferrule Glue On Plate	26
Ferrule Nailing Plate	25
Ferrule Plus Chair	23
Ferrule Push ON Locator	25
Ferrule Tail Bar	22
Ferrules Combo Dowels	23
Filament Tape Spot	34
Fillet Cutters	30
Fish Connection Plate	52, 68
Foot Anchor	14
General Purpose Grout	57
Grout Tube Bar Chair	33
Ground Release Clutch	13
Ground Release Insert	12
GR Patch Cap & Ferrule Patch Cap	56
Lifting Clutch	15
Mould Oil	42
Nexus Cast – In Plate	48

Part Name	Page No.
Nexus Easyform	44
Nexus Easyform Bent End Ferrule	46
Nexus Easyform Climbing Bracket	46
Nexus Easyform Corner Bracket	46
Nexus Easyform Ground Bracket	46
Nexus Easyform Joiner	46
Nexus Easyform Spring Bolt	46
Nexus Easyform Socket Head Bolt	46
Nexus Easyform Track Cleaner	46
Nexus Easyform Purlin Bolt	46
Nexus Extra Heavy-Duty Pry Bar	69
Olivetti 7t Face Anchor	10
Olivetti Anchor	9
Olivetti Ring Clutch	11
Olivetti Void Former	10
Olivetti Void Former Fixing Plate	11
Panel Chairs	38
Panel Connection Clip	52, 68
Panel ID Plates	60
Plastic Deck Rail	37
Polystyrene Sheets	59
PVC Elbow	33
PVC Pipe Locator	33
Quick Anchor	67
Repair Mortar	55
Rubber Ring for Steel Void Former	17
Rubber Void Former	16
Shim Packers	66
Snake Rail	36
Spray Pump & Accessories	42
Spiral Duct	32
Spiral Duct Coupler	32
Standard Ferrules	20
Star Ferrule	21
Starter Bars	53, 69
Steel Void Former	17
Strongbacks	18, 65
TB Starter Bar	53
Tension Bar	11
Threaded Bar Antenna Cap	27
Threaded Bar Coupler	26
Threaded Bar Ferrule	26
Threaded Bar Nailing Plate	27
Tie Wire	59
Top Layer Mesh Chairs	37
Void Former	16
Void Former Female Connector	16
Void Former Male Connector	16
Winged Fillet	30

